



baty



profile  
projectors



Batv International has been in business since 1932. Originally, a manufacturer of high precision dial indicators and other associated instruments such as cylinder bore gauges.

Batv soon diversified into non-contact measurement with Optical Profile Projectors and the Batv 'Shadograph' series has since become an industry standard in profile projectors. These products are still manufactured in Sussex in accordance with ISO 9001:2000.

For decades Batv has employed a team of Field Based Service Engineers. Today, our service department is the largest ISO 9001:2000 accredited Projector Service Organisation in the UK offering on-site Service, Training, Retrofits, and Repair for all makes of Profile Projectors and Vision Systems.

In keeping with its origins roots, Batv acquired John Bull and British Indicators, extending its origins range to include calipers and flexible fixturing.

The range was then completed in the eighties when our first camera based Video Inspectors were developed. Video Edge Detection (VED) was soon added giving rise to increased accuracy, repeatability and measuring speed.

Now all our Vision Systems offer the best of both worlds with the combination of non-contact (VED) and contact measurement using Renishaw's extensive touch probe range.

Today, Batv is an ISO 9001:2000 accredited company that offers a range of Metrology Instruments from Hand Tools to Vision Systems, offering measuring solutions for almost every measurement application in modern manufacturing and now, we've put them together into one catalogue for your convenience.

So, whether you need a digital caliber or a full CNC multi-sensing Vision System...

...it's here.

We look forward to talking to you.

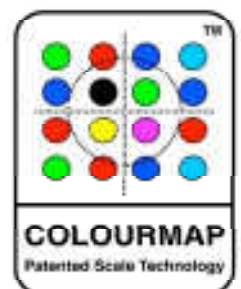
Geoff Jackson  
*Managing Director*

**Tel +44 (0) 1444 235621**

**Fax +44 (0) 1444 246985**

**Email: [sales@batv.co.uk](mailto:sales@batv.co.uk)**

**Website: [www.batv.co.uk](http://www.batv.co.uk)**



**T: 01444 235621 E: [sales@batv.co.uk](mailto:sales@batv.co.uk) [www.batv.co.uk](http://www.batv.co.uk)**



|  |    |
|--|----|
| R14 Profile Projector                    | 4  |
| R14 Technical Specification              | 5  |
| R400 Profile Projector                   | 6  |
| R400 Technical Specification             | 7  |
| R600 Profile Projector                   | 8  |
| R600 Technical Specification             | 9  |
| SM350 Profile Projector                  | 10 |
| SM350 Technical Specification            | 11 |
| SM20 Profile Projector                   | 12 |
| SM20 Technical Specification             | 13 |
| Profile Projector Horizontal Accessories | 14 |
| Profile Projector Vertical Accessories   | 15 |
| Workstages                               | 15 |
| Overlav Charts                           | 16 |
| Digital Readouts                         | 17 |
| Reprorubber                              | 18 |

# R14 PROFILE PROJECTOR

The Baty R14 bench mount profile projector with its 340mm screen combines high accuracy non-contact measurement and inspection with a large 175mm x 100mm measuring range.

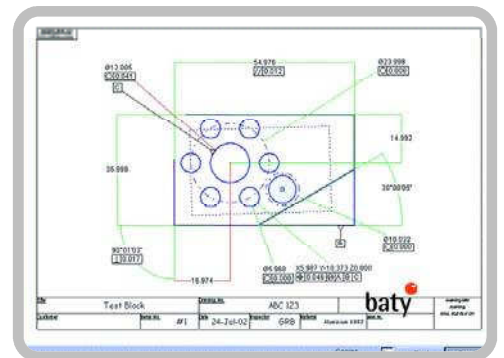
Choice of digital readouts and optional automatic profile edge detection. The horizontal light path configuration is ideally suited to machined parts that can be secured to the workstage using a range of optional accessories from the Baty fixture family. The compact and robust lightweight chassis makes the R14 ideal for workshop environments.

## Standard features

- 340mm (14") screen with 90° crosslines and chart clips
- Profile illumination with halogen lamp and green filter
- Lens magnification choice: x10, x20, x25, x50 and x100
- Surface illumination (fibre optic)
- Helix adjustment of light source  $\pm 7^\circ$  for accurate thread form projection
- Workstage with machined slot for holding accessories
- Workstage measuring range of 175mm (7") x 100mm (4")
- Digital angle measurement to 1 minute

## Optional features

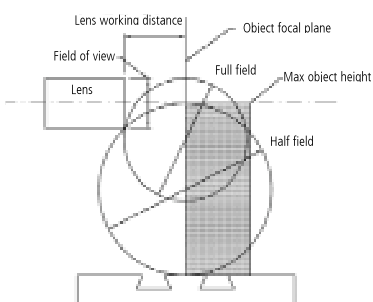
- Internally fitted automatic edge sensor (illustrated)
- Swing over lamphouse to allow clear access to the workstage
- Various electronic measuring systems to suit individual requirements
- Cabinet stand ensures a solid base and provides storage
- Other options include foot switch control and printer



**Fusion-2:** PC software option shows measured part as a dimensional drawing

**Measuring Option Fusion 2**

## Horizontal stage systems



## R14 Lens Working Capacity mm / (inches)

| Magnification                  | x10        | x20        | x25         | x50         | x100       |
|--------------------------------|------------|------------|-------------|-------------|------------|
| Field of view                  | 34 (1.4)   | 17 (0.7)   | 13.5 (0.53) | 6.8 (0.27)  | 3.4 (0.13) |
| Working distance               | 80.5 (3.2) | 38.5 (1.5) | 28 (1.1)    | 15.5 (0.64) | 30 (1.2)   |
| Max work diameter (Full field) | 119 (4.7)  | 108 (4.3)  | 56 (2.2)    | 31 (1.2)    | 77 (3.0)   |
| Max work diameter (Half field) | 100 (3.9)  | 100 (3.9)  | 79 (3.1)    | 44 (1.7)    | 96 (3.7)   |
| Maximum work piece height      | 100mm      |            |             |             |            |

## Basic Machine

|              |  |
|--------------|--|
| Type         | Bench standing with horizontal light path                      |
| Screen       | Rotating 340mm diameter, inclined 75° to horizontal, with hood |
| Image        | Inverted and reversed  |
| Power supply | 220 / 240 volt 50Hz or 110 volt 60Hz                           |
| Weight       | 60ka (132lb)   |

## The basic R14 model consists of

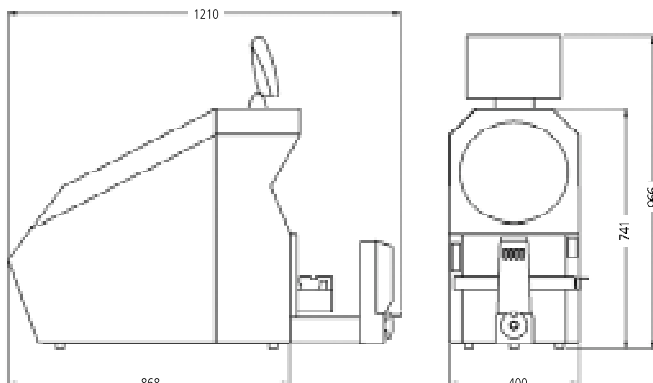
- 340mm diameter translucent screen with chart clips
- Digital angle measurement, with 1 minute of arc resolution
- Profile illumination with fan cooled lamphouse
- Surface illumination
- Focussing single lens mount
- x10 magnification lens
- Collimation lens
- Helix adjustment
- Machine slotted, chrome plated, cast iron workstage
- Green filter

## Workstage

|                  |  |
|------------------|--|
| Measuring range  | Horizontal (X) axis travel 175mm (7")<br>Vertical (Y) axis travel 100mm (4") |
| Surface area     | 325mm (12.8") x 100 (4") with slot for mounting accessories                  |
| Scale resolution | 0.0005mm   |
| Movement         | Manual with fine screw adjustment, quick release on X axis                   |

## Optical System

|                        |  |
|------------------------|--|
| Lens mount             | Single, screw clamping   |
| Lens magnification     | x10, x20, x25, x50, x100.  |
| Focussing              | By hand wheel  |
| Magnification accuracy | Profile 0.05%, Surface 0.1%  |
| Helix adjustment       | ± 7° by light source alignment   |
| Light source           | Profile illumination 12v 100w lamp (tungsten halogen)<br>Surface illumination 12v 100w lamp (tungsten halogen) |
| Option                 | Internally mounted edge sensor   |



## Measuring options

**XLS:** A simple 2 axis digital readout for X&Y measurement

**GXL:** Incorporates geometric functions for skew alignment, angle radii measurement, pitch circle diameter and construction of intersect points etc

**GXL-E:** As GXL with screen mounted automatic profile edge sensor. As an option the sensor can be fitted internally

**Fusion 2:** Fusion PC based measuring system produces dimensioned part drawing, includes geometric tolerancing, SPC, full reporting with pass / fail analysis, auto Excel™ link and auto sequence program

**Fusion 2-E:** As Fusion 2 with screen mounted automatic profile edge sensor. As an option the sensor can be mounted externally.

**OC3-CNC:** 2 axis touch screen display with external edge detection. Full CNC control allows automatic part inspection. Integral joystick for manual (motorised control).



R14 OC3 with motorised joystick control

## Accessories

See page 14.

# R400 PROFILE PROJECTOR

The Batv R400 bench mount profile projector with its 400mm screen combines high accuracy non-contact measurement and inspection with a large 300mm x 150mm measuring range.

Choice of digital readouts, corrected image optics and automatic profile edge detection. The horizontal light path configuration is ideal for checking machined components that can be secured to the workstage using a range of optional accessories from the Batv fixture family. The robust design of the R400 makes it suitable for both the shop floor and standards room.

## Standard features

- 400mm (16") screen with 90° crosslines and chart clips
- Profile illumination with halogen lamp and green filter
- Lens magnification choice: x10, x20, x25, x50 and x100
- Surface illumination (fibre optic)
- Helix adjustment of light source for accurate thread form projection
- Workstage with two machined slots for holding accessories
- Workstage measuring range of 300mm (12") x 150mm (6")
- Digital angle measurement

## Optional features

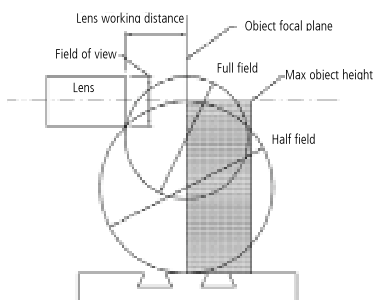
- Internally fitted automatic edge sensor
- Swivel over lamphouse to allow clear access to the workstage
- Various electronic measuring systems to suit individual requirements
- Cabinet stand ensures a solid base and provides storage
- Computer numerical control (CNC) for automated measuring
- Other options include foot switch control



R400



### Horizontal stage systems



### R400 Lens Working Capacity mm / (inches)

| Magnification                  | x10          | x20          | x25        | x50        | x100         |
|--------------------------------|--------------|--------------|------------|------------|--------------|
| Field of view                  | 40 (1.5)     | 20 (0.78)    | 16 (0.63)  | 8 (0.31)   | 4 (0.15)     |
| Working distance               | 80 (3.15)    | 82 (3.23)    | 70 (2.76)  | 53 (2.09)  | 43 (1.69)    |
| Max work diameter (Full field) | 184 (7.24)   | 184 (7.24)   | 184 (7.24) | 184 (7.24) | 184 (7.24)   |
| Max work diameter (Half field) | 178.5 (7.03) | 176.1 (6.93) | 181 (7.13) | 147 (5.79) | 122.5 (4.82) |
| Maximum work piece height      |              |              | 185 (7.28) |            |              |

## Basic Machine

|              |  |
|--------------|--|
| Type         | Bench standing with horizontal light path              |
| Screen       | Rotating 400mm diameter, vertically mounted, with hood |
| Image        | Erect, reversed left to right                          |
| Power supply | 220 / 240 volt 50Hz or 110 volt 60Hz                   |
| Weight       | 120kg (264lb)  |

## The basic R400 model consists of

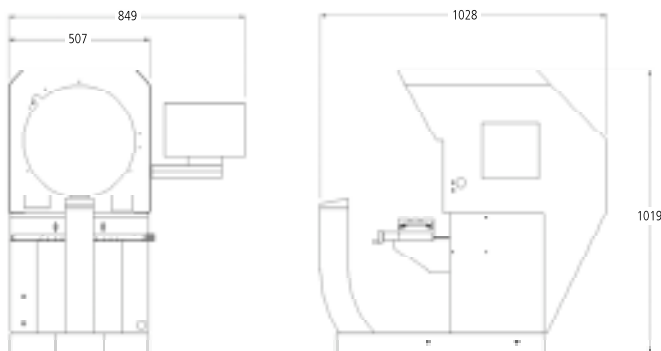
- 400mm diameter translucent screen with chart clips
- Digital angle measurement, with 1 minute of arc resolution
- Profile illumination with fan cooled lamp house
- High intensity fibre optic surface illumination
- x10 magnification lens
- Collimation lens
- Helix adjustment
- Machine slotted, chrome plated, cast iron workstage
- Green filter

## Workstage

|                  |   |
|------------------|---|
| Measuring range  | Horizontal (X) axis travel 300mm (12")<br>Vertical (Y) axis travel 150mm (6")   |
| Surface area     | 480mm (19") x 127 (5") with 2 slots for mounting accessories  |
| Scale resolution | 0.0005mm  |
| Movement         | Manual with ultra smooth plain rod drive and quick release on X axis<br>400MX motorised X and Y axes with joystick control (optional)<br>400CNC automatic position control and measurement (optional) |

## Optical System

|                        |  |
|------------------------|--|
| Lens mount             | Single, quick change snap-fit mounting   |
| Lens magnification     | x10, x20, x25, x50, x100.  |
| Focussing              | By hand wheel  |
| Magnification accuracy | Profile 0.05%, Surface 0.1%  |
| Helix adjustment       | ± 7° by light source alignment   |
| Light source           | Profile illumination 12v 100w lamp (tungsten halogen)<br>Surface illumination 12v 100w lamp (tungsten halogen) |
| Surface illumination   | Twin adjustable fibre optic light guides   |



## Measuring options

**XLS:** A simple 2 axis digital readout for X&Y measurement

**GXL:** Incorporates geometric functions for skew alignment, angle radii measurement, pitch circle diameter and construction of intersect points etc

**GXL-E:** As GXL with screen mounted automatic profile edge sensor. As an option the sensor can be fitted internally

**Fusion 2:** Fusion PC based measuring system produces dimensioned part drawing, includes geometric tolerancing, SPC, full reporting with pass / fail analysis, auto Excel™ link and auto sequence program

**Fusion 2-E:** As Fusion 2 with screen mounted automatic profile edge sensor. As an option the sensor can be mounted externally.

**Fusion-2-CNC:** Fusion PC based measuring system, motorised X & Y axis with joystick control and CNC position programming for automatic measuring, produces dimensioned part drawing. Includes geometric functions and tolerancing, SPC, full reporting with pass/fail analysis, auto Excel link & auto sequence program, includes external edge sensor.

## Accessories

See page 14.



# R600 PROFILE PROJECTOR

The Batv R600 with its 600mm (24") screen and high specification, presents the capability to make simple comparative non-contact measurement through to complex CNC programmed measuring sequences with SPC capability.

The horizontal light beam configuration is ideally suited to large machined or turned workpieces for mounting in vee blocks and centres, or customised features.

## Standard features

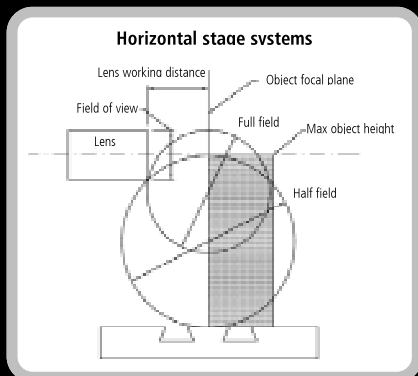
- 600mm (24") screen with 90° cross lines and chart clips
- Heavy duty workstage with 450mm x 200mm (18" x 8") measuring range and 2 machine slots for workpiece holders
- Angular rotation of  $\pm 15^\circ$  on workstage for measuring threadforms or cutting tools
- Vertical 200mm (8") Y axis power driven with joystick control
- Lens magnification choice – x5, x10, x20, x25, x50, x100
- 4 position rotating lens turret for ease of lens changing
- Profile illumination with halogen lamp and green filter
- Screen hood and curtains for use in bright ambient light conditions
- Digital angle measurement



R600 GXL

## Optional features

- Horizontal axis motorisation via joystick control
- CNC workstage for automatic measuring
- Internally fitted automatic edge sensor to allow the use of overlay charts on an unobstructed screen
- Various electronic measuring systems to suit your individual requirements
- SPC to add to your quality control without the purchase of a separate system
- Reduced workstage X axis travel to 300mm (12")



R600 Lens Working Capacity mm / (inches)

| Magnification                  | x5          | x10         | x20         | x25         | x50         | x100       |
|--------------------------------|-------------|-------------|-------------|-------------|-------------|------------|
| Field of view                  | 120 (4.72)  | 60 (2.36)   | 30 (1.18)   | 24 (.94)    | 12 (.47)    | 6 (1.72)   |
| Workpiece distance             | 245 (9.64)  | 135 (5.31)  | 132 (5.19)  | 106 (4.17)  | 93 (3.15)   | 50 (1.96)  |
| Max work diameter (Full field) | 292 (9.64)  | 343 (13.50) | 343 (13.50) | 343 (13.50) | 343 (13.50) | 195 (7.75) |
| Max work diameter (Half field) | 406 (18.98) | 343 (13.50) | 343 (13.50) | 343 (13.50) | 343 (13.50) | 235 (9.25) |



## Basic Machine

|              |   |
|--------------|---|
| Type         | Floor standing with horizontal light path |
| Screen       | Rotating 600mm (24") diameter, vertical   |
| Image        | Erect, reversed left to right             |
| Power supply | 220 / 240 volt 50Hz or 110 volt 60Hz      |
| Weight       | 550kg (1200lb)                            |

## The basic R600 model consists of

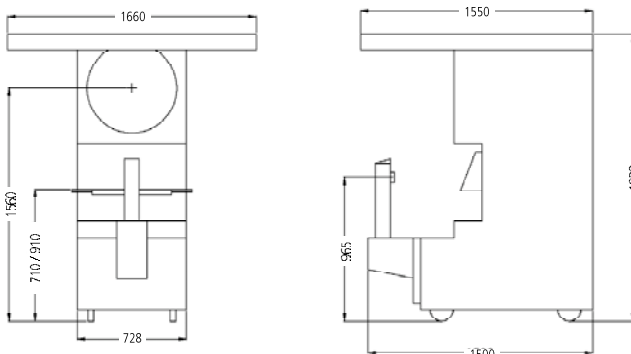
- 600mm (24") diameter translucent screen with chart clips
- Digital angle measurement, with 1 minute of arc resolution
- Profile illumination with fan cooled lamphouse
- Lens turret with 4 lenses
- Standard and high magnification collimation lenses
- Workstage with 450 x 200mm (18" x 8") travel
- Motorised Y axis (vertical) with joystick control
- Green filter
- Fibre optic surface illumination
- Screen hood and curtains

## Workstage

|                  |  |
|------------------|--|
| Measuring range  | Horizontal (X) axis 450mm (18") x Vertical (Y) axis 200mm (8")<br>Optional X axis travel 300mm (12") |
| Surface area     | 900mm (36") x 200 (8")   |
| Movement         | Horizontal manual (option: motorised), Vertical motorised by joystick control                        |
| Scale resolution | 0.0005mm   |
| Max load         | 50kg (110lb)   |

## Optical System

|                    |  |
|--------------------|--|
| Lens mount         | Rotary lens turret for 4 lenses with screw fitting             |
| Lens magnification | x5 (single lens mount) x10, x20, x25, x50, x100                |
| Focusing           | By hand wheel  |
| Helix adjustment   | ± 15° rotation of workstage                                    |
| Light source       | Profile illumination 24v 150w<br>Surface illumination 24v 250w |
| Options            | Internally mounted edge sensor<br>Footswitch control           |



## Measuring options

**XLS:** A simple 2 axis digital readout for X&Y measurement

**GXL:** Incorporates geometric functions for skew alignment, angle radii measurement, pitch circle diameter and construction of intersect points etc

**GXL-E:** As GXL with screen mounted automatic profile edge sensor. As an option the sensor can be fitted internally

**Fusion 2:** Fusion PC based measuring system produces dimensioned part drawing, includes geometric tolerancing, SPC, full reporting with pass / fail analysis, auto Excel™ link and auto sequence program

**Fusion 2-E:** As Fusion 2 with screen mounted automatic profile edge sensor. As an option the sensor can be mounted externally.

**Fusion-2-CNC:** Fusion PC based measuring system, motorised X & Y axis with joystick control and CNC position programming for automatic measuring, produces dimensioned part drawing. Includes geometric functions and tolerancing, SPC, full reporting with pass/fail analysis, auto Excel link & auto sequence program, includes external edge sensor.

## Accessories

See page 14.



Standard and high magnification collimation lenses are included in a rotary mounting.

# SM350 PROFILE PROJECTOR

The 2010 SM350 is an all new design. This vertical 14" / 350mm screen bench projector features an option where the focus axis can also be used as a 3rd measurement axis.

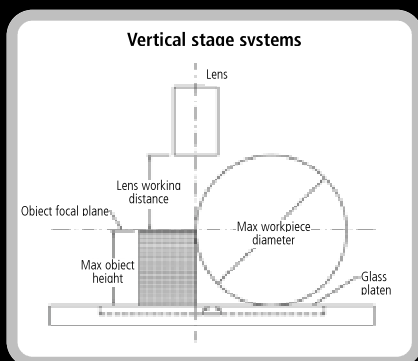
This enables Z axis height measurements to be taken using a touch tripper probe. Another new feature is the option of a three lens turret for instant lens changes without re-calibration.

## Standard Features

- Fully usable 340mm screen
- Digital screen protractor
- Built in helix adjustment
- Sturdy all-steel design
- Cross roller bearings
- Quick release 'X' and 'Y' travel
- Erect image
- Easy-view vertical screen
- Large stage travel 10" (250mm) x 5" (125mm)
- Rotating chart clips
- Fibre optic illumination for surface measurement
- Includes 10x lens

## Optional Features

- Automated measurement system with joystick control
- Automatic edge sensing
- Motorised focus axis
- Heavy duty cabinet
- Touch tripper probe for fast Z axis measurement
- 3-Position turret



SM350 Lens Working Capacity mm / (inches)

| Magnification                  | x10           | x20           | x25          | x50          | x100          |
|--------------------------------|---------------|---------------|--------------|--------------|---------------|
| Field of view                  | 34 (1.33)     | 17 (0.66)     | 13.5 (0.53)  | 6.8 (0.26)   | 3.4 (0.13)    |
| Workpiece distance             | 83.98 (3.30)  | 37.05 (1.45)  | 29.42 (1.15) | 16.58 (0.65) | 41.18 (1.62)  |
| Max work diameter (Full field) | 170.67 (6.71) | 129.9 (5.11)  | 74.82 (2.94) | 37.43 (1.47) | 90.94 (3.58)  |
| Max work diameter (Half field) | 220 (8.66)    | 162.27 (6.38) | 52.62 (2.07) | 51.51 (2.02) | 139.94 (5.50) |
| Max workpiece height           | 114 (4.48)    | 113 (4.44)    | 106 (4.17)   | 111 (4.37)   | 103 (4.05)    |

# SM350 TECHNICAL SPECIFICATION

## Basic Machine

|              |   |
|--------------|---|
| Type         | Bench standing with vertical light path                     |
| Screen       | Rotating 340mm (14") diameter, vertically mounted with hood |
| Image        | Erect and reversed  |
| Power supply | 220 / 240 volt 50Hz or 110 volt 60Hz                        |
| Weight       | 133kg   |

## The basic SM350 model consists of

- 340mm (14") screen with 90 degree crosslines and chart clips
- Profile illumination with halogen lamp and green filter
- Lens magnification choice: x10, x20, x25, x50, x100
- Surface illumination (fibre optic)
- Helix adjustment of light source for accurate thread form projection
- SA-2510 precision workstage with 250 x 125mm measuring range, 0.0005mm
- Digital angle measurement

## Optical System

|                        |  |
|------------------------|--|
| Lens mount             | Single, quick change with lock nut, optional 3 lens turret               |
| Lens magnification     | x10, x20, x25, x50, x100   |
| Focusing               | By hand wheel  |
| Magnification accuracy | Profile 0.05%, Surface 0.1%  |
| Helix adjustment       | $\pm 7^\circ$ by light source alignment                                  |
| Light source           | Profile illumination 12v 100w lamp<br>Surface illumination 12v 100w lamp |
| Surface illumination   | Twin adjustable fibre optic light guides                                 |

## Measuring options

**XLS:** A simple 2 axis digital readout for X&Y measurement

**GXL:** Incorporates geometric functions for skew alignment, angle radii measurement, pitch circle diameter and construction of intersect points etc

**GXL-E:** As GXL with screen mounted automatic profile edge sensor. As an option the sensor can be fitted internally

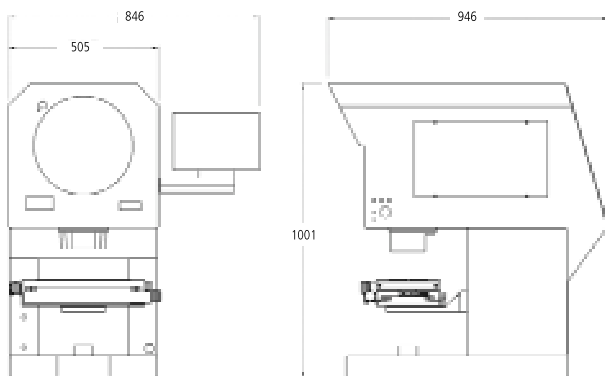
**Fusion 2:** Fusion PC based measuring system produces dimensioned part drawing, includes geometric tolerancing, SPC, full reporting with pass / fail analysis, auto Excel™ link and auto sequence program

**Fusion 2-E:** As Fusion 2 with screen mounted automatic profile edge sensor. As an option the sensor can be mounted externally.

**Fusion 2E-CNC:** Fusion PC based measuring system, motorised X & Y axis with joystick control and CNC position programming for automatic measuring.

## Accessories

See page 15.



SM350-GXL

# SM20 PROFILE PROJECTOR

The Batv Shadomaster SM20 with its 500mm screen and high specification presents the capability to make simple comparative measurements through to complex results storage and tolerancing with SPC capability.

The vertical light beam configuration is ideally suited for workpieces which are more readily mounted flat or horizontally.

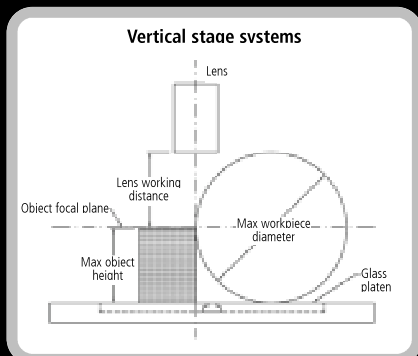
- 500mm screen with 90 degree crosslines and chart clips
- Analed screen for easy viewing
- Profile illumination with halogen lamp and green filter
- Single lens mounting
- Lens magnification choice: x5, x10, x20, x25, x50 and x100
- Helix adjustment of light source for accurate thread form projection
- 250mm x 125mm stage measuring range
- Digital angle measurement

### Optional features

- Screen hood and curtains with generous proportions for use in bright ambient light conditions
- Surface illumination through twin fibre optics for bright full colour surface inspection
- 3 position lens turret for easy lens changing
- Various electronic measurement systems to suit your individual requirements
- SPC to add to your quality control without the purchase of a separate system



**GXL-GXL-E:**  
Shopfloor DRO  
with feature view and full  
reporting



**SM20 Lens Working Capacity mm / (inches)**

| Magnification                             | x10 | x20 | x25X | x25 | x50 | x100 |
|---|-----|-----|------|-----|-----|------|
| Condenser                                 | L   | L   | L    | S   | S   | S    |
| Field of view                             | 50  | 25  | 20   | 20  | 10  | 5    |
| Max diameter                              | 200 | 200 | 200  | 200 | 180 | 85   |
| Max focal plane height (profile lighting) | 205 | 203 | 218  | 254 | 240 | 195  |
| Max end mill height (surface lighting)    | 150 | 153 | 153  | 155 | 150 | 150  |

## Basic Machine

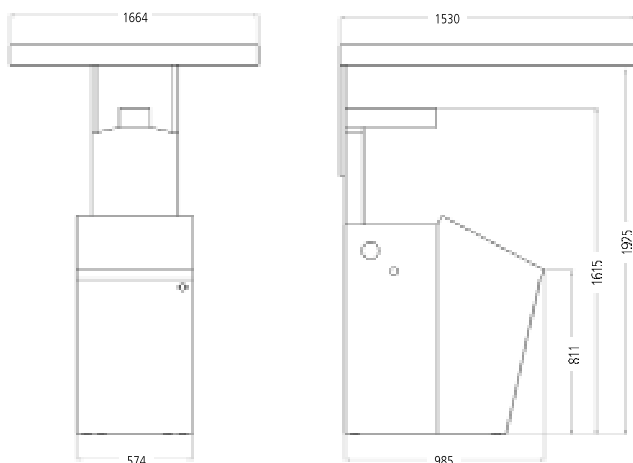
|              |  |
|--------------|--|
| Type         | Floor standing with vertical light path                    |
| Screen       | Rotating 500mm diameter, inclined at 30° to the horizontal |
| Image        | Inverted and reversed                                      |
| Power supply | 220 / 240 volt 50Hz or 110 volt 60Hz                       |
| Weight       | 150kg  |

## The basic SM20 model consists of

- 500mm (20") diameter screen
- Digital angle measurement
- Profile illumination with fan cooled lamphouse
- Single lens mount
- Collimation lens for x10, x20, x25 magnification with swivel mount for x50, x100
- Manual focus system
- Green filter
- SA-2510 precision workstage with 250mm x 125mm measuring range, 0.0005mm

## Optical System

|                        |  |
|------------------------|--|
| Lens mount             | Single lens mount, rotating turret to accommodate three lenses – optional                                      |
| Lens magnification     | x5 (not turret mounted)<br>x10, x20, x25, x50, x100.   |
| Magnification accuracy | Profile 0.05%, Surface 0.1%  |
| Helix adjustment       | ± 7°   |
| Light source           | Profile illumination 12v 100w lamp (tungsten halogen)<br>Surface illumination 12v 100w lamp (tungsten halogen) |
| Surface illumination   | Twin adjustable fibre optic light guides   |



## Measuring options

**XLS:** A simple 2 axis digital readout for X&Y measurement

**GXL:** Incorporates geometric functions for skew alignment, angle radii measurement, pitch circle diameter and construction of intersect points etc

**GXL-E:** As GXL with screen mounted automatic profile edge sensor. As an option the sensor can be fitted internally

**Fusion 2:** Fusion PC based measuring system produces dimensioned part drawing, includes geometric tolerancing, SPC, full reporting with pass / fail analysis, auto Excel™ link and auto sequence program

**Fusion 2-E:** As Fusion 2 with screen mounted automatic profile edge sensor. As an option the sensor can be mounted externally.

## Accessories

See page 15.



# PROFILE PROJECTOR HORIZONTAL ACCESSORIES

## Accessories for R14/R400

| Part No.   | Description                                       |
|------------|---|
| 202-1327-1 | Footswitch for GXL                                |
| ABFS-001   | Footswitch for AB2 Fusion Svstems                 |
| 52-371     | Protective cover – R14                            |
| 350-035    | Protective cover – R400 / SM350                   |
| SA-328     | Cabinet stand                                     |
| SA-250     | Iris diaphragm                                    |
| SA-256     | Vee blocks  |
| SA-258     | Spring loaded centres                             |
| SA-259     | Riser blocks 38mm (1½") for SA-256                |
| SA-152     | Vice stage and vice                               |
| SA-260     | Swivel vice                                       |
| SA-276     | Single vee and clamp (Vee parallel to optic axis) |
| SA-153     | Fixture base                                      |
| SA-527     | Glass plate work holder                           |

## Fixture Family

|        |   |
|--------|---|
| 52-600 | Self centering vice                       |
| 52-601 | Dual axis vee block and clamp to Ø 15mm   |
| 52-602 | Dual axis vee block and clamp to Ø 30mm   |
| 52-603 | Precision rotary base                     |
| 52-604 | Universal base                            |
| 52-605 | Precision ground steel alignment feature  |
| 52-606 | Magnetic vee block                        |
| 52-701 | Dual axis vee block fitted with side base |

## Accessories for R600

|        |                            |
|--------|----------------------------|
| SA-551 | Iris diaphragm             |
| SA-542 | Large vee blocks & centres |
| SA-543 | Riser blocks               |
| SA-614 | Large vice stage & vice    |
| SA-527 | Glass plate work holder    |
| SA-617 | Heavy duty rotating vice   |
| SA-733 | Swing over lamphouse       |
| SA-606 | Screen chart rest bar      |



SA-527



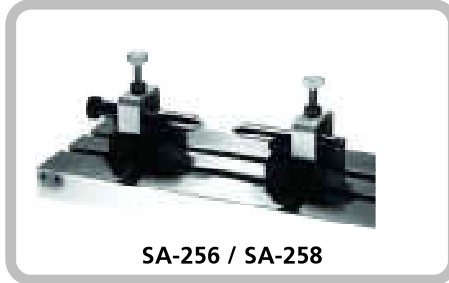
Rotary Axis



SA-250



52-602



SA-256 / SA-258



52-701 / 52-604



SA-152



52-600 / 52-603



SA-260



52-605



SA-542  
Large Vee Blocks and Centres



SA-543 Riser Blocks

# PROFILE PROJECTOR VERTICAL ACCESSORIES



Rotary Glass Stage  
SA-245-2



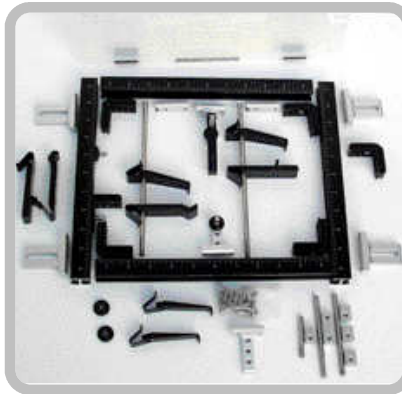
SA-370 Back Stop



SA-371 Side Stop



SA-196-EXT  
Dual Vee Block and Centres



## Accessories for SM350/SM20

| Model      | Description                            |
|------------|--|
| SA-245-2   | Rotary glass stage                     |
| SA-370     | Back stop                              |
| SA-371     | Side stop                              |
| SA-196-EXT | Dual vee block and centres             |
| FM-2510    | Open frame fixturing for 2510 stage    |
| SA-551     | Iris diaphragm for SM20 / SM350 / R600 |
| 350-035    | Protective cover SM350 / R400          |

# WORKSTAGES

SA-179



SA-119-A



SA-2510

## SA-179

- Fixed glass work platen

## SA-119-A

- 50mm x 50mm workstage incorporating Digital Micrometers with 0.5 micron resolution

## SA-2510

- Heavy duty precision workstage with large 250mm x 125mm, X-Y measuring range, ultra smooth plain rod drives and rapid traverse on BOTH axis, complete with 0.5 micron resolution scales

# OVERLAY CHARTS

Batv screen charts, thread form diagrams and scales are specially manufactured on stable plastic. They are translucent and must be used as an overlay on either a clear or translucent glass screen.

Standard rulings include crossline, grid and concentric circles, whilst special charts can be supplied to your requirements. Replacement glass screens can also be supplied with either standard or special rulings on application.

## Ruling Type

### Crossline

- Chain crossline at 90° with 30°, 45° and 60° intermediate chain lines in two quadrants

### Grid

- Grid squares in 2mm increments (metric) or 0.1" increments (imperial) with every 5th and 10th line in bold

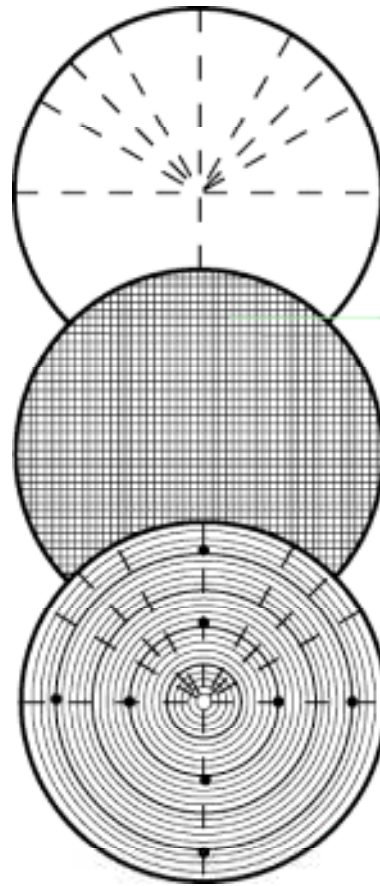
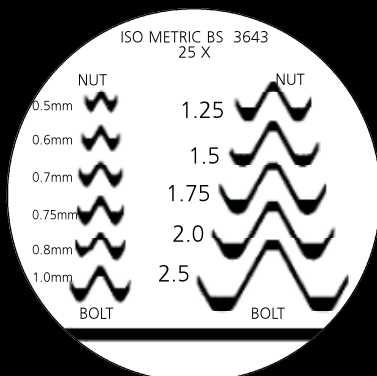
### Concentric Circles

- Concentric circles in 2mm or 0.1" incremental radii and 90° crosslines with 30°, 45° and 60° intermediate chain lines in two quadrants

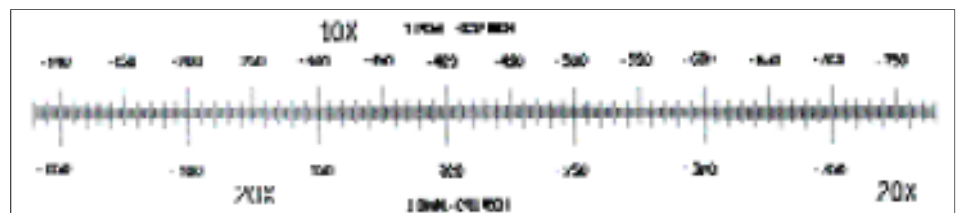
### Measuring Scales

- Used for making direct measurements at the screen. The graduations and numbering relate to the magnification being used and therefore give a direct reading of work size

- Thread form diagrams are available on request.



|                             | 254mm (10") | 305mm (12") | 500mm (20") |
|-----------------------------|-------------|-------------|-------------|
| Crossline                   |             | SC12-5      | SC20-5      |
| Grid Metric                 | GM275-1     | SC12-8      | SC20-8      |
| Grid Imperial               | GC275-1     | SC12-6      | SC20-6      |
| Concentric Circles Metric   | RM275-1     | Sc12-11     | SC20-11     |
| Concentric Circles Imperial | RC275-1     | SC12-10     | SC20-10     |



| Part Number | Length | Resolution       | Magnification |
|-------------|--------|------------------|---------------|
| E2/1020     | 10"    | 0.002" / 0.001"  | x10 / x20     |
| E2/2550     | 10"    | 0.001" / 0.0005" | x10 / x20     |
| M2 / 1020   | 250mm  | 0.05 / 0.025mm   | x10 / x20     |
| M2 / 2550   | 250mm  | 0.02 / 0.01mm    | x25 / x50     |
| E5/1020     | 20"    | 0.002" / 0.001"  | x10 / x20     |
| E5/2550     | 20"    | 0.001" / 0.0005" | x25 / x50     |
| M5/1020     | 500mm  | 0.05 / 0.025mm   | x10 / x20     |
| M5/2550     | 500mm  | 0.02 / 0.01mm    | x25 / x50     |

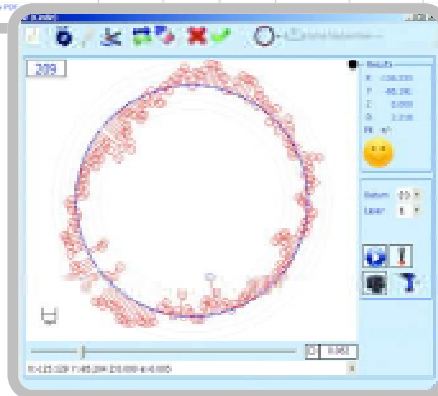
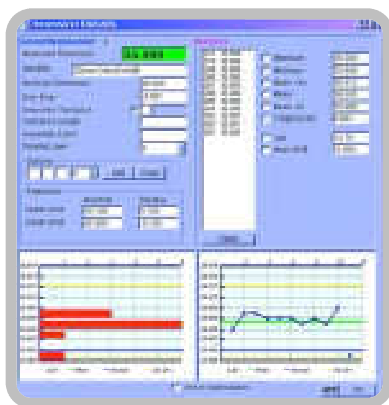
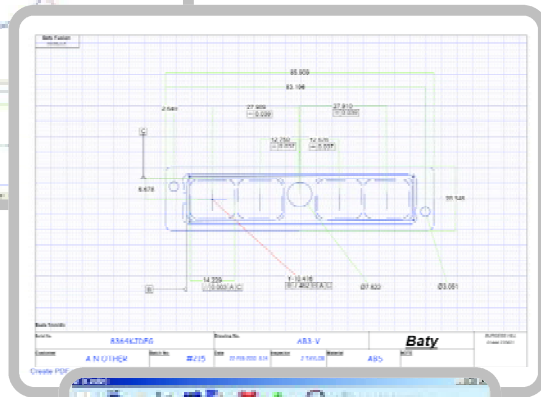
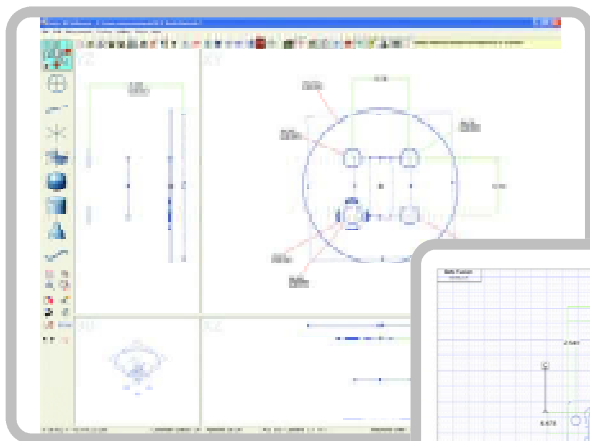




XLS



GXL/GXLE



**XLS:** A simple two axis digital readout for point to point X,Y or R,A measurements.

Absolute or incremental mode with Inch / metric conversion. Zero, preset and print functions. RS232C serial and parallel ports. Footswitch compatible.

**GXL:** As XLS with geometric functions for skew alignment, angle, radius, point, line, circle. Automatic feature list and graphical view. Macro programming facility guides the operator through the measurement process. Feature tolerancing and standard report printout. Footswitch compatible.

**GXL-E:** As GXL with profile edge sensor to take data points automatically. Eliminates operator error and speeds up inspection times.

**Fusion-2:** PC based measuring system with full geometric functionality. Graphical view of measured part can be printed as fully dimensioned drawing with geometric tolerances. Other graphics include form error and SPC charts. Full reporting capability includes tabulated details with pass / fail analysis, auto-link to Excel™ and auto sequence programming feature. Can be supplied as software only for self-installation or as a complete system.

**Fusion 2-E:** As Fusion but supplied with screen mounted automatic edge detector. As an option the sensor can be fitted internally.

**FUSION2-E CNC:** Fusion software with full CNC control for automatic part inspection. Auto program from CAD. Manual joystick control. multiple part reports and SPC.

# REPRORUBBER



## Original Reprorubber® Thin Pour

**Final Colour: LIGHT GREEN**

For internal-shape applications where a thin pour will completely fill the cavity without voids. A complete replica casting is quickly formed.

- Manipulation time is approx 2 minutes and cure time is approximately 10 minutes
- Start to finish: approximately 12 minutes
- Kits include graduated mixing cups, wooden spatulas and instructions

## Original Reprorubber® Quick Setting Putty

**Final Colour: LIGHT BLUE**

Roll two equal-sized balls of catalyst putty and base putty and simply knead them together like dough. Excellent for external shapes. Simply spread over master pushing down with fingers and wait for cure 8-10 minutes. You have 1 or 2 minutes of manipulation time. Therefore 12 minutes start to finish. You can also cast internal shapes and cavities but some pressure should be applied such as a weighted object on top.

## Metrology grade casting material

Reprorubber offers numerous advantages over other hard-copy replicating materials:

- Quick casting – zero shrinkage
- No release agent required – will not stick to part
- Surface finish replication is exact with excellent optical properties easily checked on an optical comparator or video inspection machine
- Copies can be re-copied from original mould
- Replicas are permanent – will not leach out, ooze out, or gas out
- No more 16 hour cure time as with RTV silicones
- More accurate than all other RTV compounds

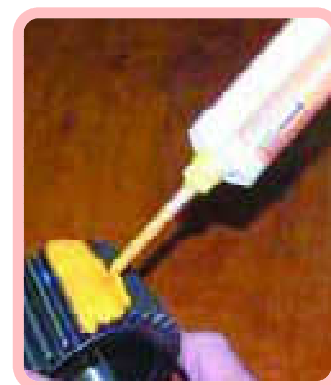


## New Reprorubber® Orange – Medium Body Pre-filled Cartridges

**Final Colour: ORANGE**

New Medium Body (Medium Viscosity – Medium Durometer) casting material ideal for both internal and external applications. Disposable pre-filled dual barrel 50ml cartridges can quickly dispense casting material utilizing the REPRO-MIX II Gun System.

- Mix time: 15-30 seconds and cure time is 5 - 6 minutes
- Start to finish: 6 - 8 minutes



### REPRORUBBER THIN POUR 15-30 seconds

### REPRORUBBER MEDIUM BODY ORANGE 15-30 seconds

### REPRORUBBER QUICK SETTING PUTTY Approximately 1 minute

|                                    | REPRORUBBER<br>THIN POUR<br>15-30 seconds | REPRORUBBER<br>MEDIUM BODY ORANGE<br>15-30 seconds | REPRORUBBER<br>QUICK SETTING PUTTY<br>Approximately 1 minute |
|------------------------------------|---|--|--|
| Working Time (Manipulation Time)   | 2 minutes                                 | 2.5 minutes  | 1 - 2 minutes (from beginning of mix)                        |
| Setting Time (at room temperature) | 10 - 15 minutes                           | 5 - 6 minutes                                      | 8 - 10 minutes   |
| Permanent Deformation              | 0.2%                                      | 0.3%   | 0.3%   |
| Dimensional Stability              | less than 0.50%                           | less than 0.40%                                    | less than -0.25%   |
| Tear Strength                      | 44 pounds per sq. inch                    | 300 pounds per sq. inch                            | 105 pounds per sq. inch                                      |
| Elongation                         | 60% at break                              | 70% at break                                       | 6.3% at break  |
| Durometer (Shore A-2)              | 30 (at 15 minutes)                        | 40 (at 10 minutes)                                 | 50 (at 7 minutes)  |
| Temperature Stability              | 1 week @ 23°C (72°F)                      | 1 week @ 23°C (72°F)                               | 1 week @ 23°C (72°F)   |
| Detail Reproduction                | EXCELLENT                                 | EXCELLENT  | EXCELLENT  |

## Quick Dispense Cartridge System Kit

Reprorubber Quick Dispense Cartridge System Kits contain everything you need to easily create Highly Accurate, Zero Shrinkage replicas. Each kit includes 1 each Repro-Mix II Reusable Dispensing Gun, 6 each 50ml Pre-filled Reprorubber Disposable Cartridges, 15 Disposable Mixing Nozzles, 2 Micro Injector Snap-On Nozzles, and a Deluxe Fitted Carrying Case.



### Kit No. 16305

Reprorubber Orange

Also Available: Thin Pour (Green) and Combo Kits.

Nozzle (optional) for small holes and cavities

Low cost, disposable mixing nozzle tips allow multiple applications

## Ordering Complete Kits:

|                  |  |
|------------------|--|
| <b>No. 16300</b> | Reprorubber Thin Pour (Green) Quick Dispense Cartridge System Kit Complete                           |
| <b>No. 16305</b> | Reprorubber Orange (Medium Body) Quick Dispense Cartridge System Kit Complete                        |
| <b>No. 16309</b> | Reprorubber Combo Kit Quick Dispense Cartridge System Kit. Includes 3 each Thin Pour & 3 each Orange |

## Ordering Original Mix Your Own Kits:

|  |                 |                            |
|--|-----------------|----------------------------|
| <b>Original Reprorubber® Thin Pour – Final Colour: LIGHT GREEN</b> |                 |                            |
| <b>Trial Size Kit:</b>   | Order No. 16116 | Thin Pour 130ml Trial Kit  |
| <b>Standard Size Kits:</b>   | Order No. 16135 | Thin Pour 380ml Kit        |
|  | Order No. 16137 | Case of 10 each 380ml Kits |

## Original Reprorubber® Quick Setting Putty – Final Colour: LIGHT BLUE

|                        |                 |                                     |
|------------------------|-----------------|-------------------------------------|
| <b>Trial Size Kit:</b> | Order No. 16129 | 220ml Trial Quick Setting Putty Kit |
| <b>Other Kits:</b>     | Order No. 16130 | 1½ lb (520ml) Introductory Kit      |
|                        | Order No. 16131 | 7lb (2150ml) Economy Kit            |



## System Refills:

|                  |  |
|------------------|--|
| <b>No. 16301</b> | Reprorubber Thin Pour (Green) 50ml Cartridge, 1 each           |
| <b>No. 16302</b> | Reprorubber Thin Pour (Green) 50ml Cartridges, 6 pack          |
| <b>No. 16306</b> | Reprorubber Orange (Medium Body) 50ml Cartridge, 1 each        |
| <b>No. 16307</b> | Reprorubber Orange (Medium Body) 50ml Cartridges, 6 pack       |
| <b>No. 16311</b> | Repro-Mix II Dispensing Gun (reusable)                         |
| <b>No. 16313</b> | Repro-Mix II Helix Mixing Nozzles, 15 Pack                     |
| <b>No. 16316</b> | Repro-Mix II Helix Mixing Nozzles, 100 Pack                    |
| <b>No. 16315</b> | Quick Dispense Cartridge System Fitted Case (without contents) |
| <b>No. 16314</b> | Micro Injector Snap-On Nozzle, Pack of 15                      |

## Applications

You can take impressions of:

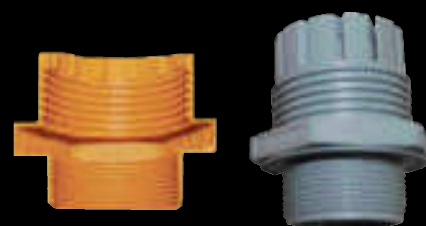
- All metals
- Non metals
- Paper or cardboard items
- Wood, marble etc
- All plastics
- Non metals
- Rubber
- Ceramic and glass items

## Other Uses Include:

- Prototypes of rubber type components such as gaskets, washers, etc
- Making joints where flexibility is required
- As a mask for high temperature plasma spray of metallic coatings
- Fixturing where semi-rigid structure is desired

## Physical advantages over the hard-copy replicas

- Replica is easy to remove – even if they are under cuts or grooves
- Cross-sectioning of replica is easily accomplished with a knife or razor
- It can then be checked on an optical comparator or microscope
- Surface finish replication is exact with excellent optical properties
- Reprorubber copies can be re-copied (copy from a 'female mould' yields a male-shaped replica).
- Replicas are permanent – will not leach or ooze out nor outgas
- No more 16 hour cure time as with RTV silicones
- More accurate than all other RTV compounds
- Reprorubber putty will withstand up to 600°F (or more)



Distributed by:



**Batv International**

**Victoria Road. Burgess Hill.**

**West Sussex RH15 9LR**

**Tel +44 (0) 1444 235621**

**Fax +44 (0) 1444 246985**

**Email: [sales@batv.co.uk](mailto:sales@batv.co.uk)**

**Website: [www.batv.co.uk](http://www.batv.co.uk)**



Official sponsors of **HAWK**  **Kawasaki** British Superbike Team